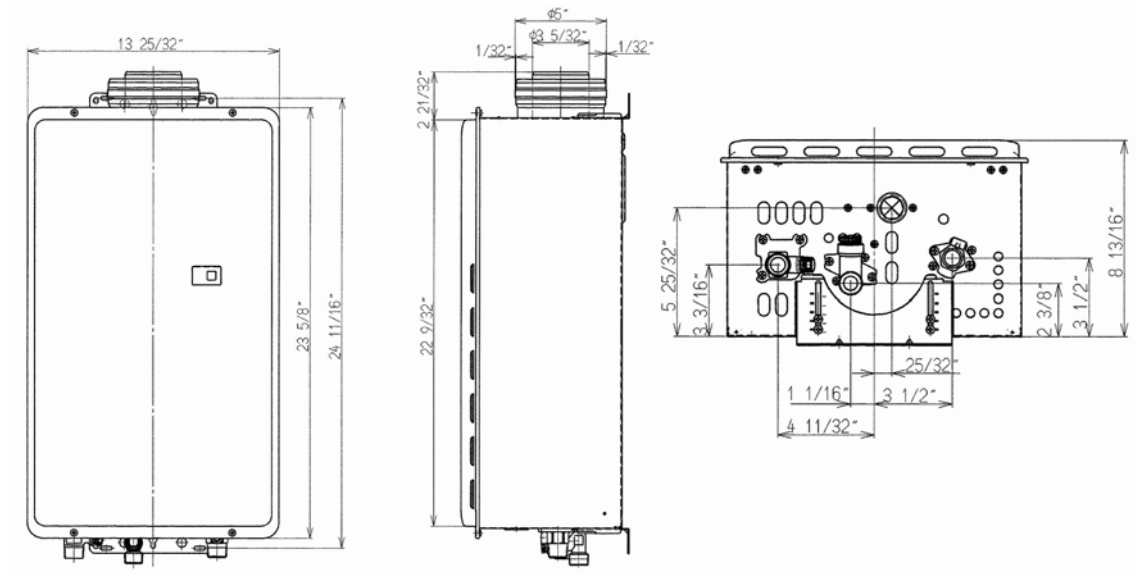




2520FFU

Type of Appliance	Temperature controlled, continuous flow, gas hot water system.	
Operation	With or without remote controls, mounted in kitchen, bathroom, etc.	
Exhaust system	Direct vent, forced combustion	
Rinnai model number	REU-2520FFU-US	
Minimum/Maximum gas rate (Input Btuh)	15,000 BTU's - 180,000 Btuh	Natural Gas or Propane
Electrical	Appliance - AC 120 Volts - 60Hz. Remote control - DC 12 Volts	
Electrical consumption	Normal	75 watts
	Standby	5 watts
	Anti-frost protection	100 watts
Hot water capacity	0.7 to 5.3 GPM (50°F rise);	0.7 to 5.3 GPM (35°F rise)
Temperature range (with optional remotes)	MC controller, 96 - 140°F; BC and BSC controllers, 96 - 120°F	
Temperature (without remote)	120°F (Factory Default)	
Approved gas types	Natural or Propane - Ensure unit matches gas type it's being installed on.	
Installation	Internal	

Dimensions

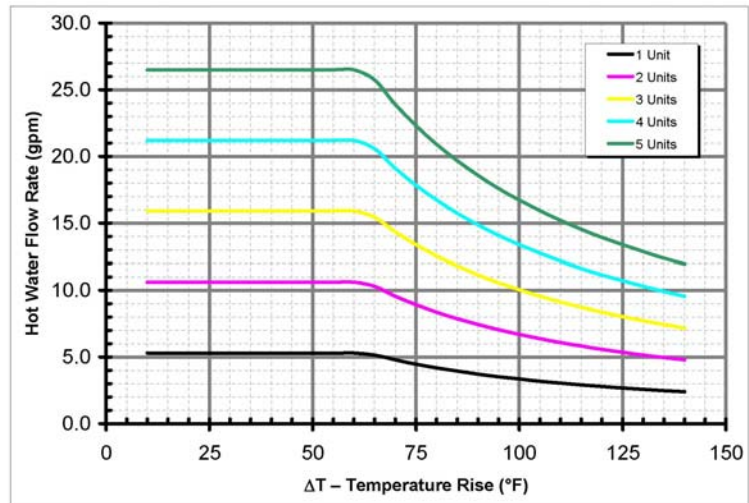


Weight	48 Lbs.	
Energy Factor	Natural Gas: 0.82	Propane: 0.87
Thermal Efficiency	Natural Gas: 82%	Propane: 87%
Service Connections	Gas supply 3/4" MNPT Cold water inlet 3/4" MNPT Hot water outlet 3/4" MNPT	



Ignition system
 Water temperature control
 Water flow control
 Minimum/maximum water supply pressure
 Water Flow Capacity Curves
 (For 1 to 5 units manifolded in parallel)

Direct electronic ignition
 Simulation feed forward and feedback
 Water flow sensor, electronic water control device and fixed by-pass
 20 – 150 PSI (50 or above is recommended for maximum flow)



Safety Devices

- Flame failure - Flame rod
- Boiling protection - 203°F
- Combustion fan rpm check
- Over current - Glass fuse (3 amp)
- Remaining flame (OHS)
- Thermal fuse 264°F
- Automatic frost protection

Remote Controls

MC-45-4 US (96-140 °F range)
 BC-45-4 US or BSC-45-4 (96-120 °F range)

Remote control cable

Non-polarized two-core cable

Clearances from combustibles

- Top of heater.....6"
- Front of heater.....6"
- Sides of heater.....2"
- Suitable for Closet, Attic, and Crawl Space Installations
- Back of heater.....0"
- Bottom of Heater12"
- From Vent Pipe.....0"

Clearances from non-combustibles

- Top of heater.....2"
- Front of heater.....6"
- Sides of heater.....1/2"
- Back of heater.....0"
- Bottom of heater2"
- From Vent Pipe.....0"

Vent Terminal Clearances (Outside)

- Below Eave, Porch, Overhang ...36"
- From any Internal Corner.....12"
- From an Opening, Window, Door...12"
- Above Ground12"

Min. and Max. gas supply pressure

Natural Gas: Min. 6" W.C. (NAT) Max. 10.5" W.C.
 Propane Gas: Min. 10" W.C. (LPG) Max. 13.5" W.C.

Manifold Gas Pressure
 (Inches W.C.)

Natural Gas: 3.7" W.C. high fire 0.77" W.C. low fire
 Propane Gas: 4.2" W.C. high fire 0.93" W.C. low fire

Warranty

Residential: Ten years heat exchanger / five years parts
 Commercial or Space heating: No Warranty